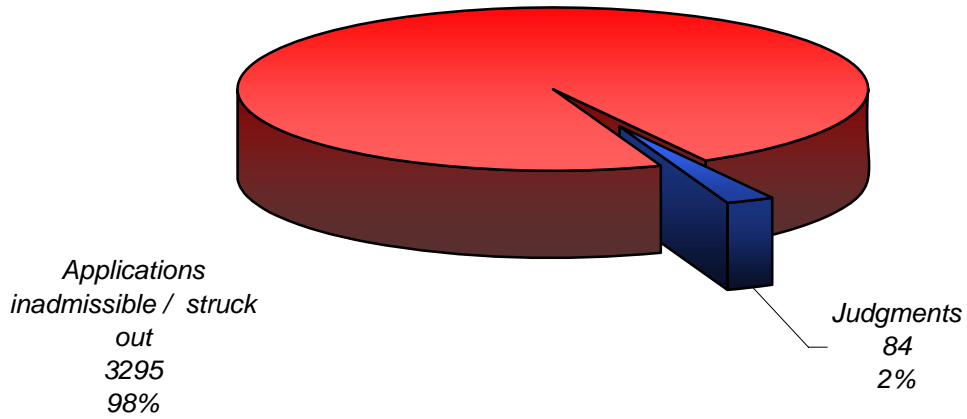


EUROPEAN COURT OF HUMAN RIGHTS
COUR EUROPÉENNE DES DROITS DE L'HOMME

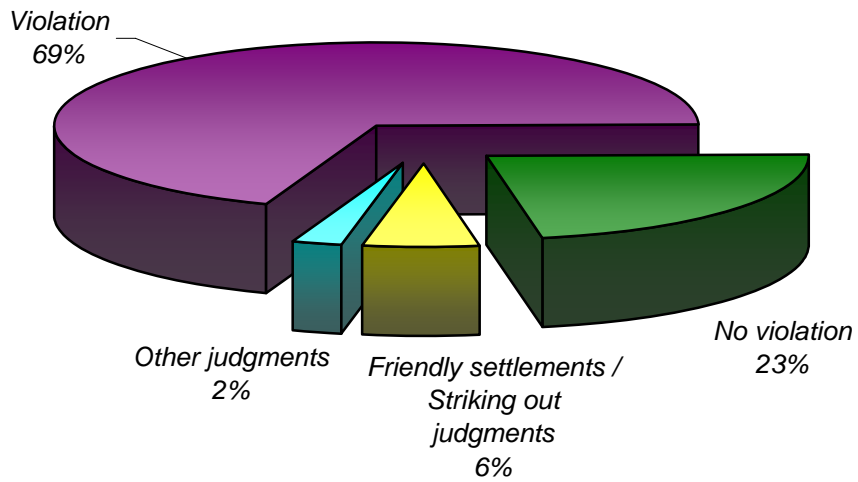
Statistics for Switzerland

on 1 January 2009

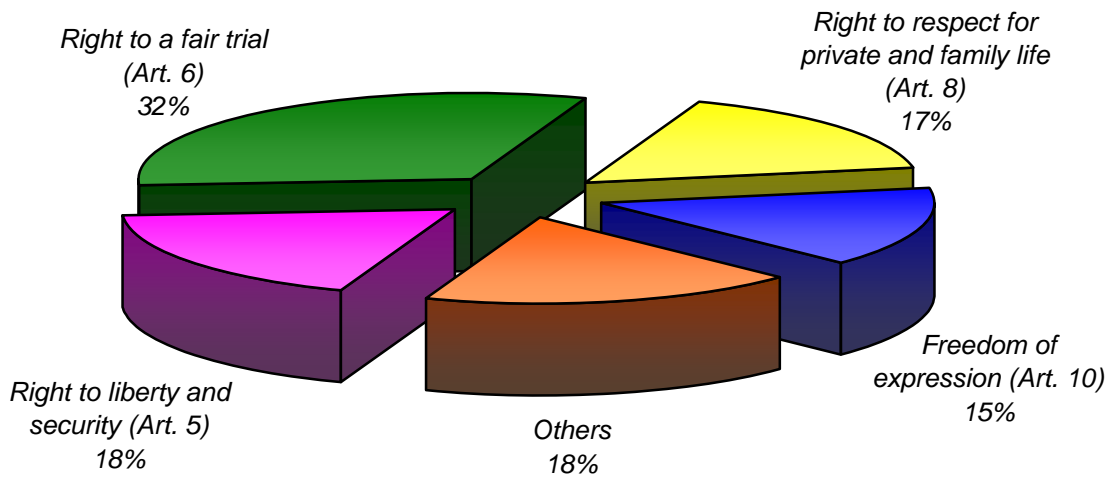
Judgments and decisions



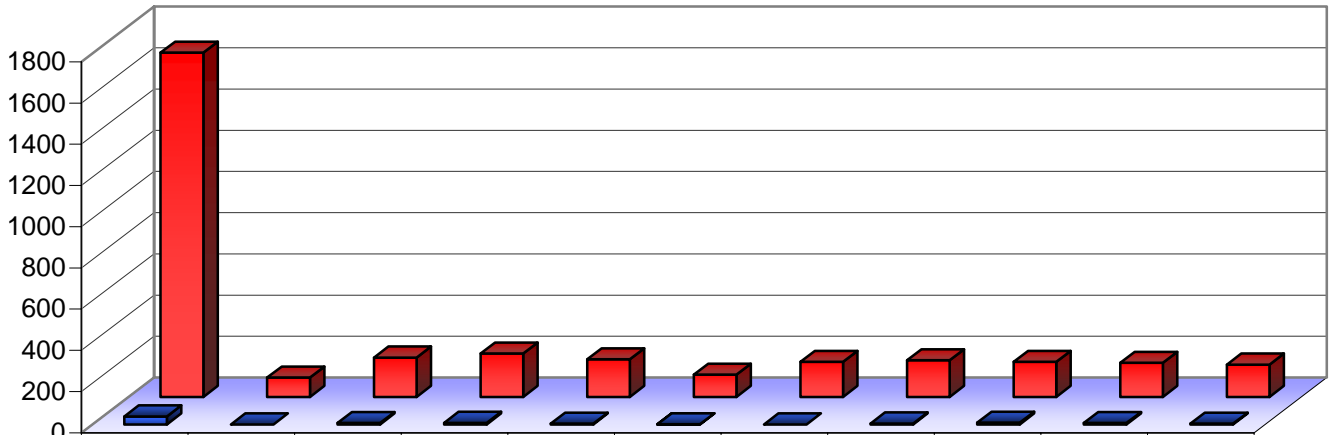
Type of judgments



Subject-matter of violation judgments

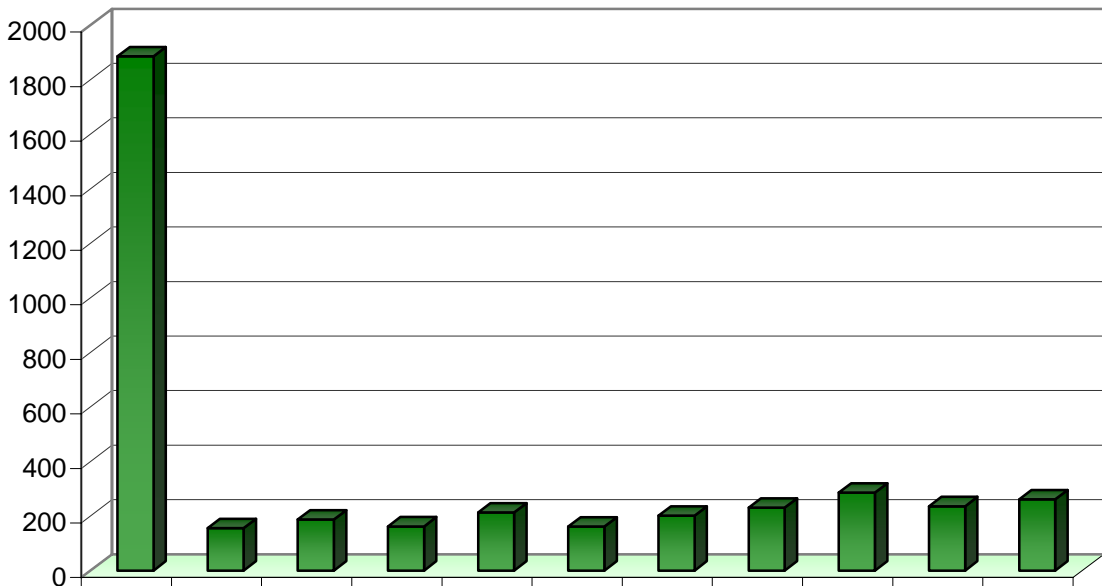


Decisions and judgments



| | 1959-1998 | 1999 | 2000 | 2001 | 2002 | 2003 | 2004 | 2005 | 2006 | 2007 | 2008 |
|--|-----------|------|------|------|------|------|------|------|------|------|------|
| Judgments | 39 | 0 | 7 | 8 | 4 | 1 | 0 | 5 | 9 | 7 | 4 |
| Applications inadmissible or struck out | 1670 | 94 | 191 | 210 | 182 | 108 | 170 | 178 | 170 | 165 | 157 |

Applications allocated to a judicial formation



| | 1959-1998 | 1999 | 2000 | 2001 | 2002 | 2003 | 2004 | 2005 | 2006 | 2007 | 2008 |
|---|-----------|------|------|------|------|------|------|------|------|------|------|
| Applications allocated to a judicial formation | 1886 | 156 | 187 | 162 | 213 | 161 | 201 | 231 | 286 | 236 | 261 |